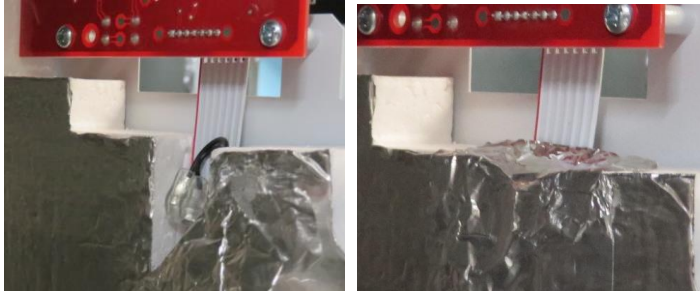


Part No. 5422 Installation Instructions

1. Remove the wire access door and front panel of the dehumidifier.
2. Remove the leads from the FROST SENSOR terminals.



3. Peel back the metal tape and tuck the terminals into the wire channel and replace the tape.



4. Clip the wire tie that secures the sensor wire to the coil.

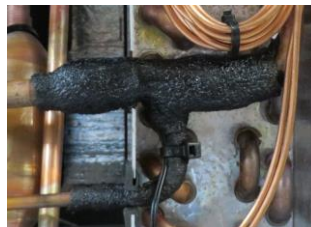


5. Remove the cork tape from the sensor on the suction line.

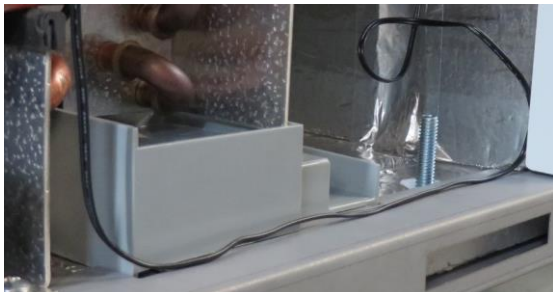


6. Remove the sensor from the suction line and cut the wire as close as possible to the drain pan.

7. Clip the new sensor in the same location on the suction line.
8. Replace the cork tape around the sensor and suction line.
9. Use a wire tie to secure the sensor wire to the process port and to provide strain relief.



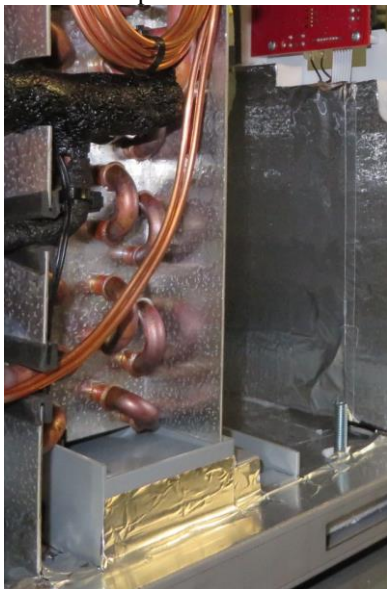
10. Run the frost sensor wire down to the base and along the drain pan to the front of the unit and connect the leads to the FROST SENSOR terminals.



11. Any extra wire can be coiled and taped to the inlet panel.



12. Use metal tape to secure the wire to the base, drain pan and inlet panel.



13. Replace the front panel and wire access door.

Aprilaire[®]