

Service parts covered by these instructions:

- Part No. 5883** Fan, 80pt Dehumidifier, with 6MFD Capacitor
Part No. 5886 Fan, 100pt Dehumidifier, with 12MFD Capacitor

BEFORE STARTING INSTALLATION

1. Turn off the dehumidifier control by pressing the ON/OFF button.
2. Turn off the power to the dehumidifier by moving the power switch to the **OFF** position.
3. Unplug or disconnect the incoming power to the dehumidifier.

Tools Required:

- #20 Torx bit (T20)
- 16" Long Extension Driver
- Drill
- Needle Nose Pliers

REMOVING THE ELECTRICAL BOX (Reference Diagram A)

1. On the drain side of the dehumidifier, remove (11) access panel screws. Remove the access panel and the white EPS insulation panel.
 2. Remove (1) screw from the electrical box cover and set the electrical box cover to the side.
 3. Disconnect the Hi-Temp, Low -Temp and UI communication (red, blue & white) wires from the internal board. Pull the wires up and out of the top of the electrical box through wire access hole #1.
 4. Remove (1) screw that is holding in the fan capacitor to the electrical box.
 5. Disconnect the brown and blue wires from the fan capacitor with a needle nose pliers.
 6. Unclip (1) cable clamp that is holding the fan wire.
 7. Remove (1) ground screw that is holding the ground wire to the electrical box.
 8. Disconnect the red and blue fan wires from internal board.
 9. Pull the fan wire up and out of the electrical box through wire access hole #3.
 10. Remove (4) electrical box mounting screws and move the electrical box off to the right side to gain access to the fan/bracket.
- Tip:** Support the electrical box by securing the electrical box to the cabinet with a wire or zip tie.

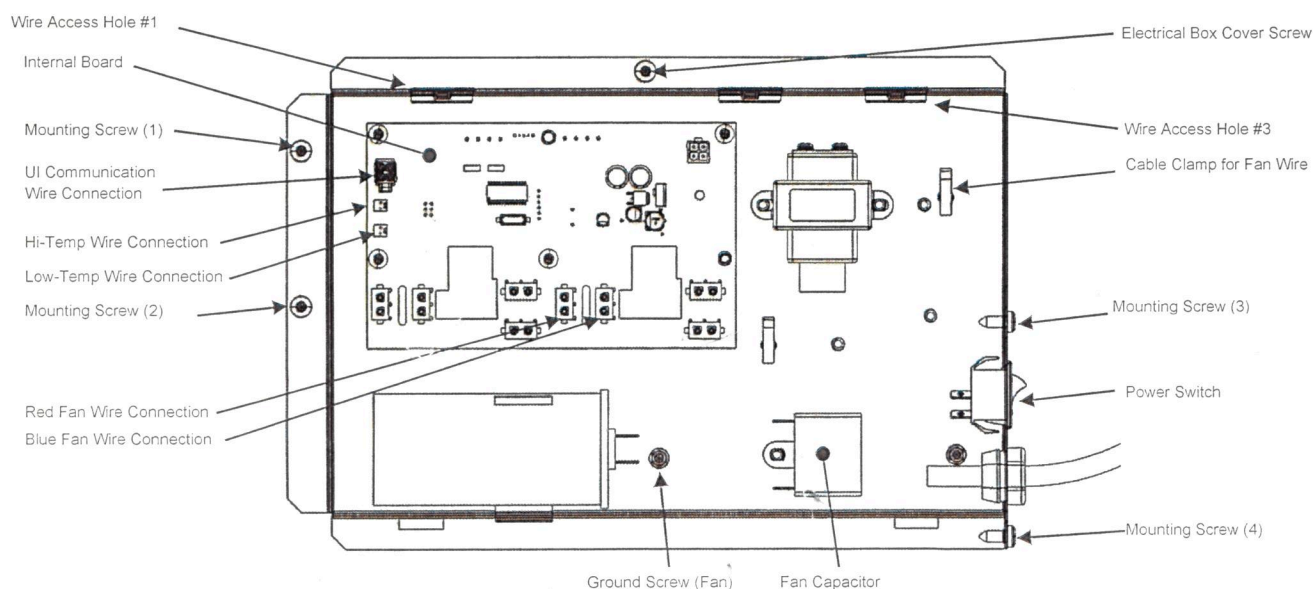


Diagram A

REMOVING THE FAN

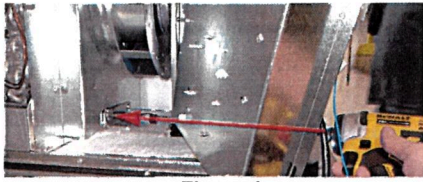


Figure 1

1. On the discharge side of the dehumidifier, remove the outlet duct collar or outlet cover (if installed) to gain access to the fan bracket screws.
2. Insert your extension driver with T20 bit through the outlet grill. Unscrew the (2) bottom and (2) top fan bracket screws about 1/4". (Figure 1)

Tip: Removing the outlet cover or duct collar (if installed) from the top of the dehumidifier will make it easier to locate the top fan bracket screws.

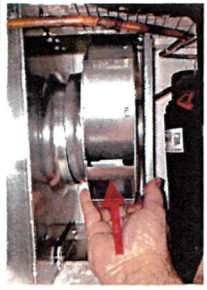


Figure 2

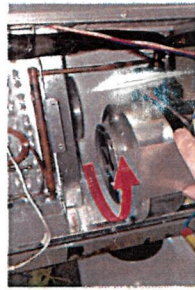


Figure 3

3. Lift the original fan/bracket up and off the (4) screw heads. (Figure 2)
4. Swing the bottom leg of the fan bracket towards you and roll the fan out. (Figure 3)

INSTALLING THE FAN

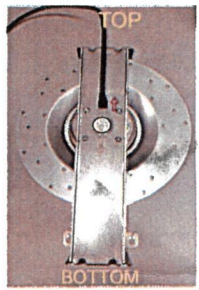


Figure 4

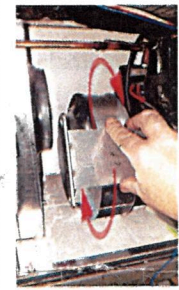


Figure 5

1. Install the replacement fan with the top of the bracket in first. (Figure 4)
2. Rotate the fan bracket in a counter clockwise direction and hook the bracket onto the (4) screws. (Figure 5).
3. Secure the fan bracket to the fan panel by tightening the (4) mounting screws.

Important! Verify proper bracket alignment by spinning the fan to insure there is no interference with the fan and inlet flange.

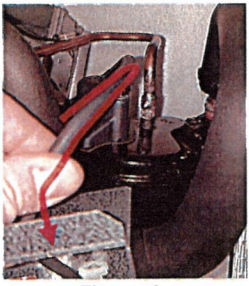


Figure 6

4. Route the fan wire up and over the compressor, then under the discharge tube and over the suction tube U-bend. (Figure 6)
5. Push the fan wires through the electrical box, wire access hole #3.
Note: The large plastic quick connectors will need to be pushed through individually. (Figure 7)
6. Route the fan wire through the cable clamp and secure the clamp.
7. Connect the fan red and blue wires to the internal board. The mating connectors on the board are labeled with the corresponding wire color.

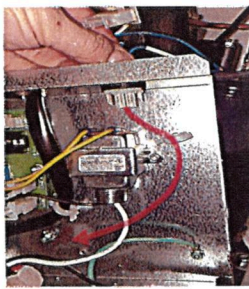


Figure 7

8. Install the new fan capacitor that was provided with the replacement fan. Connect the blue and brown wires with quick connect terminals to the capacitor.
Note: The wires can be connected to either terminal.
9. Secure the fan ground wire to the electrical box with (1) ground screw.
10. Connect the Hi-Temp, Low -Temp and UI communication (red, blue and white) wires to the internal board. Any slack in the wires should be positioned in the electrical box.
11. Secure the electrical box to the dehumidifier with (4) screws. Reinstall the electrical box cover.

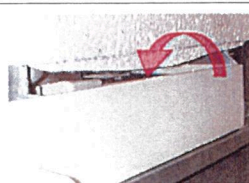


Figure 8

12. Install the EPS insulation panel by hooking the bottom edge into the drain pan. (Figure 8)
13. Attach the side access panel with (11) screws.
14. *Reattach outlet duct collar and outlet cover (if removed).
15. Restore power to the dehumidifier.