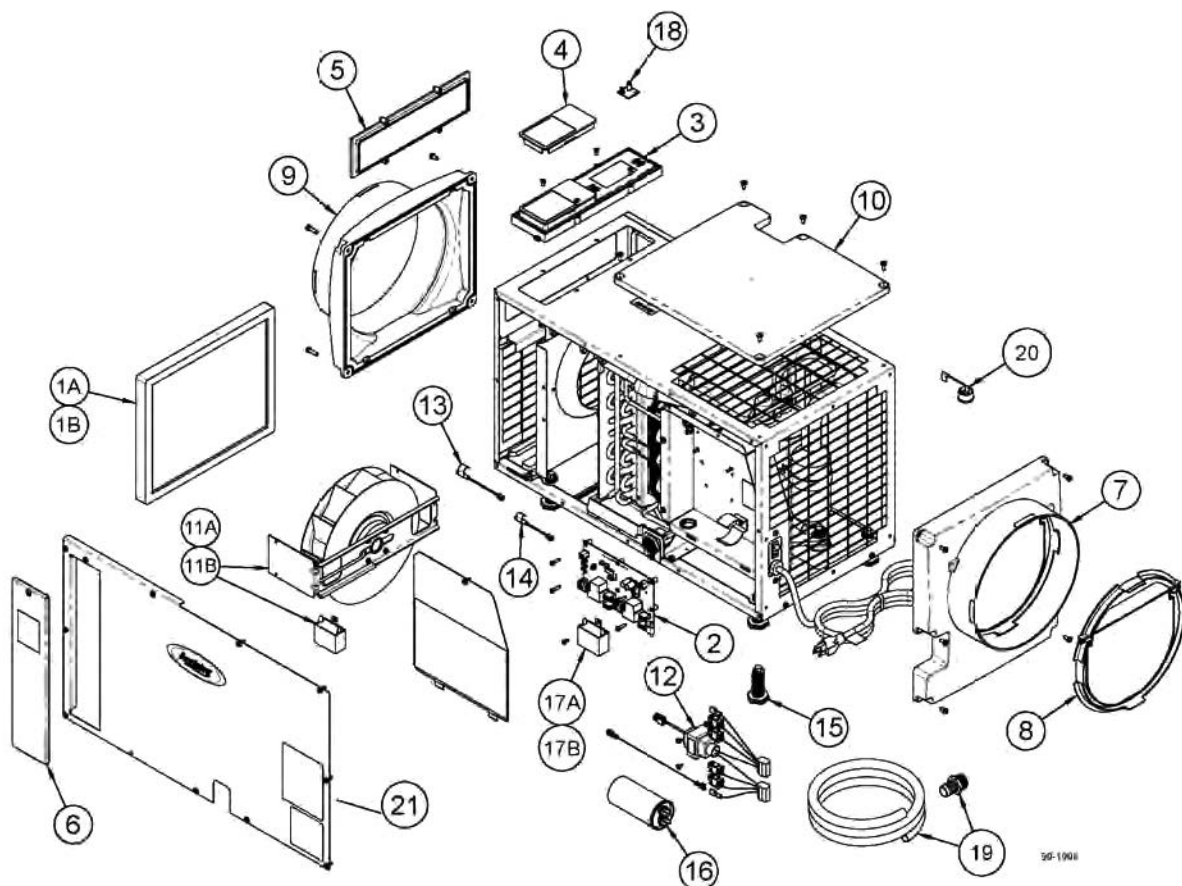


Model 1870/1870F/1870W/1872/E130/E130H/E130C Dehumidifiers

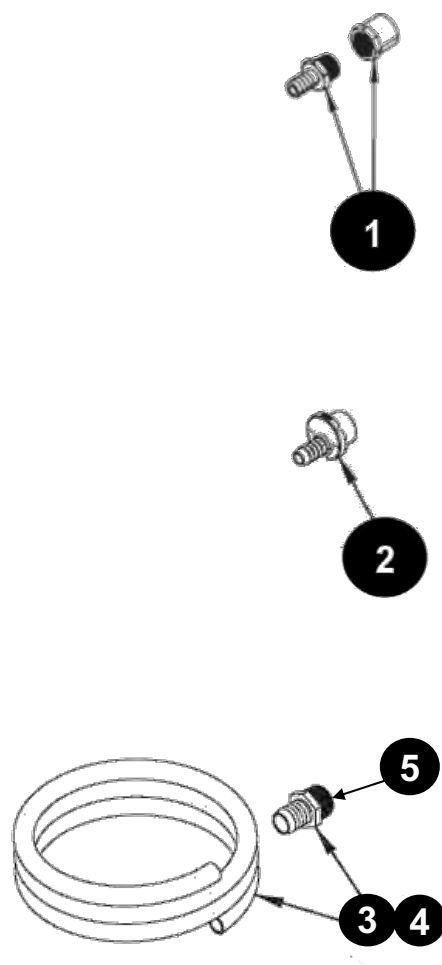


NO.	PART DESCRIPTION	SELL PACK *Must be ordered in multiples of*	PART NO.
1A	Filter, 14" x 19" x 1" EZK (1870 & 1872) ¹	1	5569
1B	Filter, 16" x 19" x 1" EZK (1870F)	1	5570
2	Internal Control Board	1	5444
3	User Interface Assembly	1	5445
4	Wiring Access Door	1	5446
5	UI Control Hole Cover	1	5447
6	Filter Access Door	1	5571
7	Outlet Duct Panel	1	5449
8	Backflow Damper, 10"	1	5450
9	Inlet Duct Panel	1	5451
10	Outlet Cover	1	5452
11A	Fan, 130pt with 10MFD Capacitor (1870)	1	5572
11B	Capacitor, 10MFD, 250V	1	5573
12	Transformer and Wire Harness	1	5454
13	Low Temperature Sensor	1	5455
14	High Temperature Sensor	1	5456
15	Leveling Foot ¹	1	5457
16	Capacitor, 70MFD, 370VAC, Compressor Run Capacitor	1	5941
17A	Capacitor, 10MFD, 250VAC, Fan Run Capacitor	1	5573
17B	Capacitor, 8MFD, 450VAC for the Model 1870F, Fan Run Capacitor	1	5459
18	RH Sensor used on models with detachable Temp/RH daughter board	1	5460
19	Drain Tube + Fitting ²	1	See Page 4 for Details
20	Compressor Overload Switch	1	5574
21	Right Service Panel	1	5922
OTHER PARTS (Not Shown)			
	Low Profile Condensate Pump with 20' of 3/8" Drain Tube	1	4856
	Hanging Kit for 1870 Series Dehumidifiers	1	5691
	Hanging Kit for 1800 Series Dehumidifiers	1	5822
	Left Service Panel	1	5921

¹ Not Compatible with 1870F

² Drain tube only included with 1870F & 1872

Drain Fittings for 1800-Series and E-Series Dehumidifiers



NO.	PART DESCRIPTION	SELL PACK *Must be ordered in multiples of*	PART NO.
1	Original Drain Fittings, ½ MNPT x ½ Barb & ¾ M Slip x ½ FNPT Reducer	1	5461
2	2nd Generation Drain Fitting, Custom Outlet Barb ¾ M Slip x ½ Barb	1	5585
3	New Threaded Fitting, ¾" MNPT x ¾" Barb, with 5ft of ¾" Drain Tube	1	5665
4	New Threaded Fitting, ¾" MNPT x ¾" Barb, with 10ft of ¾" Drain Tube ¹	1	5692
5	New Threaded Fitting, ¾" MNPT x ¾" Barb (Fitting Only) ¹	1	5693

¹E-Series Dehumidifiers use #5693 Threaded Fitting or #5692 Threaded Fitting and Drain Tube