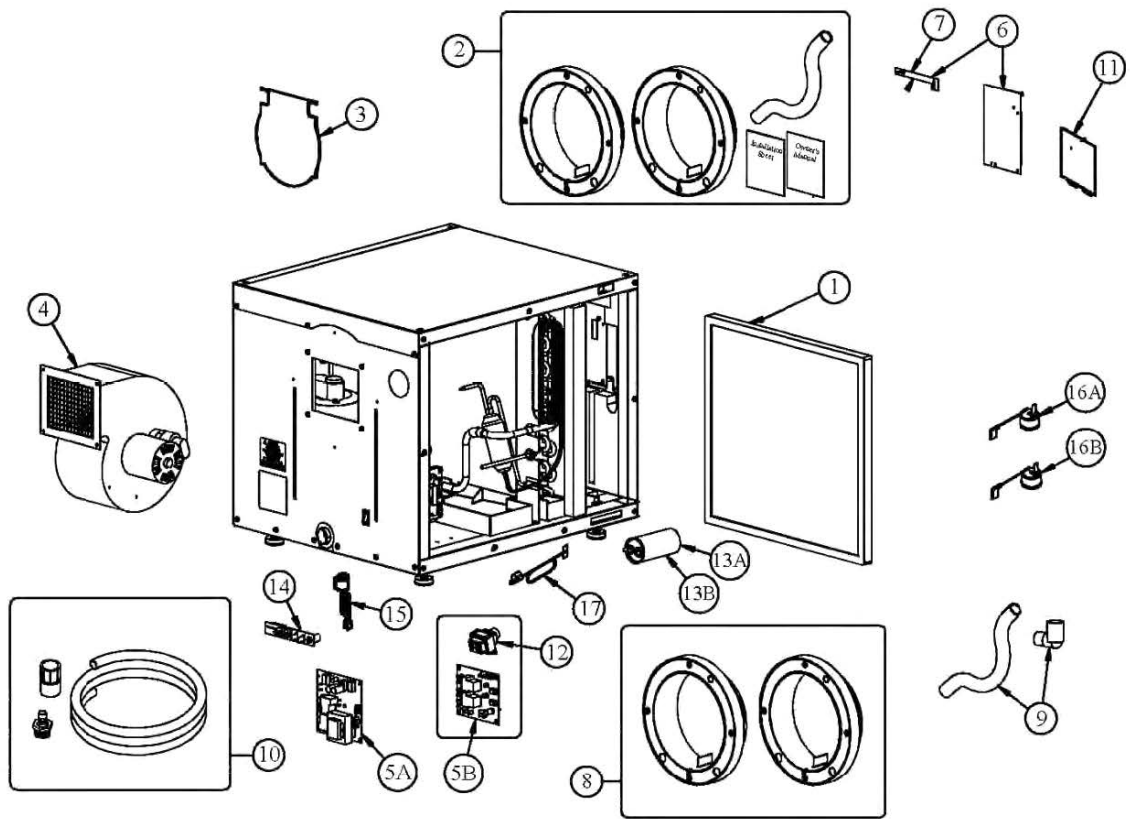


Model 1710A/1750A/1770A Dehumidifiers



Model 1710A/1750A/1770A Dehumidifiers

NO.	PART DESCRIPTION	SELL PACK *Must be ordered in multiples of*	Model 1710A/1750A/1770A	Model 1700/1710/1720/1750/1770
			PART NO.	PART NO.
1	Filter	1	4510	4510
2	Drain Trap/Collars/Manual	1	4843	4843
3	Backflow Damper ⁵	1	4918	4918
4	Blower/Motor Assembly, 1710A/1750A and 1700/1710/1750	1	4515	4515
	Blower/Motor Assembly, 1770A and 1720/1770	1	4646	4646
5A	Power Supply Board	See Table 1 Below		4517
5B	Power Supply Board (New Style Without Integrated Transformer)			N/A
6	Control Board Kit ⁶	1	5353	5353
7	Sensor Board	1	4752	4752
8	Duct Collars	2	4751	4751
9	Drain Trap and PVC Elbow	1	4842	4842
10	Condensate Drain Hose Assembly (Included with Model 1710A Only)	1	4863	N/A
11	LED Control Door	1	4864	4864
12	10 VA Transformer	1	5262	5262
13A	Capacitor, 60MFD (Model 1770A Only)	1	5255	N/A
13B	Capacitor, 55MFD	1	4922	N/A
14	Daughter Board	1	5264	N/A
15	High Temperature Cutout Switch	1	4924	N/A
16A	Compressor Overload Switch, 1710A/1750A	1	5324	N/A
16B	Compressor Overload Switch, 1770A	1	5325	N/A
17	Frost Sensor	1	5422	N/A
OTHER PARTS				
	External Control ⁷	1	76	70
	Convertible Installation Kit (2-N/O 8" Damper, 2-N/C 8" Damper and Transformer)	1	4522	4522
	Distributor and Nozzle, 1710A/1750A	1	4903	N/A
	Low Profile Condensate Pump with 20' of 3/8" Drain Tube	1	4856	4856
	Living Space Duct Kit (25' Of 8" Insulated Flex Duct With 2 Quick Install Grilles)	1	4857	4857
	Living Space Duct Kit (25' of Insulated Flex Duct With 2 Quick Install Grilles and 2 Reducers)	1	5546	5546

⁵ The Backflow Damper (Part No. 4918) is Compatible with All Models 1730A, 1770A, but Only with Model 1750A with Serial Numbers Greater than 2610AA147015.

⁶ If Control Board being Replaced is Currently Used with a Model 70 Control, the Control Must be Replaced with a Model 76 Control.

⁷ Only use a Model 70 Control to Replace an Existing Model 70 Control with Units Produced Before Serial Number 4610AAXXXXXX.

Table 1: Power Supply Board Part Number

NO.	PART DESCRIPTION	Compatible With	SELL PACK *Must be ordered in multiples of*	PART NO.
5A	Power Supply Board	Control Board without DH Terminal	1	4517
5B	Power Supply Board (New Style without Integrated Transformer)	Control Board with DH Terminal ⁸	1	5260

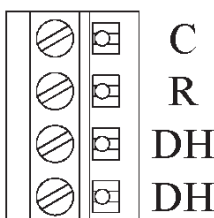
⁸ DH Terminal Implemented on All Units with Serial Number 4610AAXXXXXX or Later.

Identifying Type of Control by Terminal Block

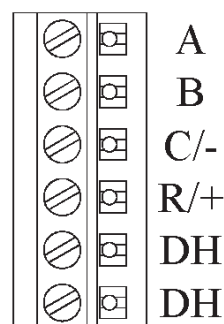
MODEL 70



MODEL 75



MODEL 76



90-1976

